

The two alternating columns could be termed 'A' for the regular Betty Martin and 'B' for the irregular chequerboard. The groups of purl tetrads (groups of 4 in a square) up the entire yoke for column 'B' are as follows: quincunx (group of five tetrads), blank, down chevron (three tetrads in a triangle pointing downwards), up chevron, a pair, up chevron, quincunx, blank, down chevron, blank, up chevron, blank, quincunx, singleton, down chevron, down chevron, blank, up chevron, blank, quincunx, blank, down chevron, quincunx, blank, double quincunx, blank, quincunx.

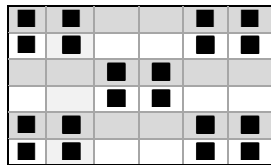
It is not certain whether the irregular nature of column B is deliberate or sloppy knitting.

I have charted what I think is an error exactly as I saw it: the first down chevron (greyed out) begins on row 10 when you might expect it to start on row 9 but the interval between chevrons is then corrected by having only a single plain row (row 14) where you might expect to see 2. But then again, maybe it was deliberate.

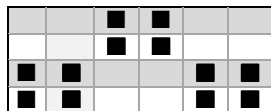
Terminology:



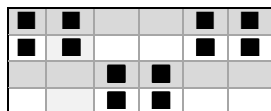
A purl tetrad (group of four purls in a square)



A quincunx (group of five tetrads)



An up chevron



A down chevron





GP23 version 1.1: Test swatch by Val Smith. Signature 4-ply wool, 2 mm needles with a shield.

Martin Warren (martin.warren@talktalk.net)



Attribution-NonCommercial
CC BY-NCJ